

Sync

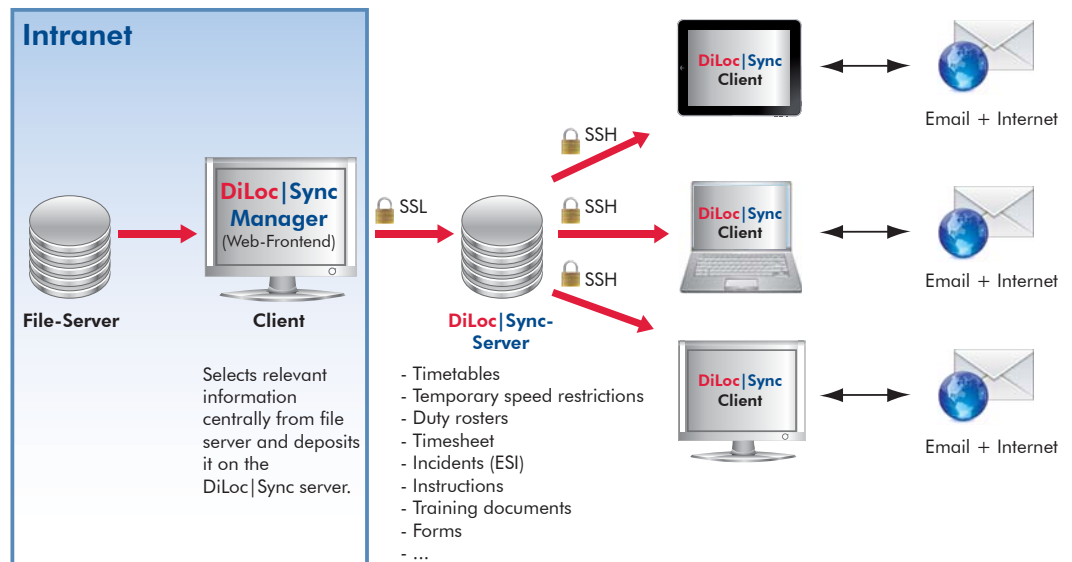
DiLoc®

- ▲ Data distribution
- ▲ User guidance
- ▲ Device management
- ▲ Available for
 - Windows 7/8 (not Windows 8 RT), 10
 - iPad, iPad Mini
 - Android (4.2+)

Mobile communication for driving personnel

Providing engine drivers with consistent information is becoming increasingly important. Train companies have to prove that their employees are provided with up-to-date documents, instructions and directives at all times. In practice, this involves a great deal of administrative effort and considerable use of resources if this is done in the form of paper documents.

DiLoc|Sync simplifies this process considerably, since it provides a platform that is supplied with data from a central location and from which engine drivers can retrieve the latest documents at the mere push of a button.



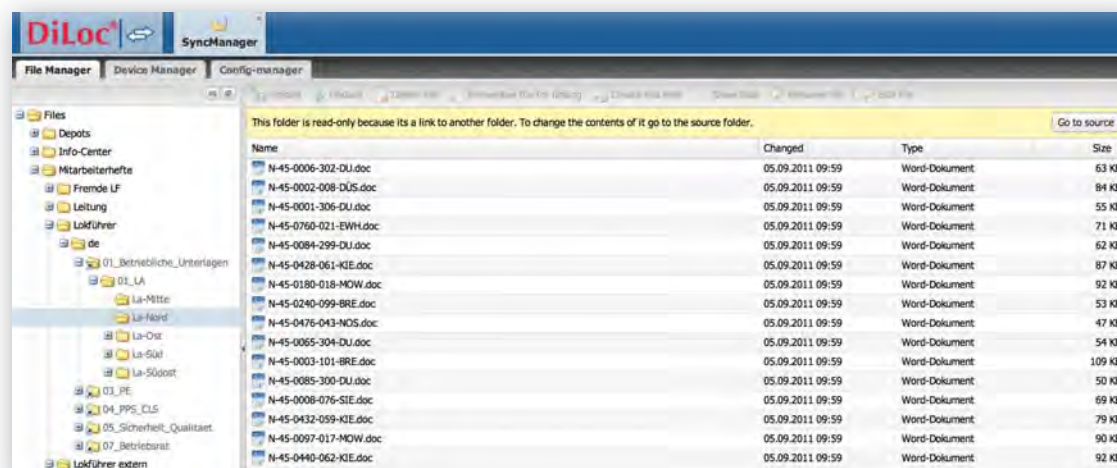
The user guidance of DiLoc|Sync is specially tailored to the needs of engine drivers. The experience from the continuous productive use since 2009 and many satisfied engine drivers has made DiLoc|Sync the most frequently used system in Europe. DiLoc|Sync is **multilingual**. It is already available in

German, English, French and Italian. It is a simple matter for the user to switch languages while the program is running. It is possible to save the documents separately for each language so that each user only sees the distributed documents in the selected language, which provides greater clarity.

File Manager

All documents are made available to personnel via the file manager. This work is made easier by an easy-to-use web user interface.

Windows Explorer-like directory structures can be created and managed. Any files can be loaded into the directories, which are then synchronised on the engine drivers' devices (or other groups of people). After synchronisation has taken place a report is displayed containing all of the newly synchronised files. The personnel are therefore aware of which files are new, modified or have been deleted. This makes their work much easier.

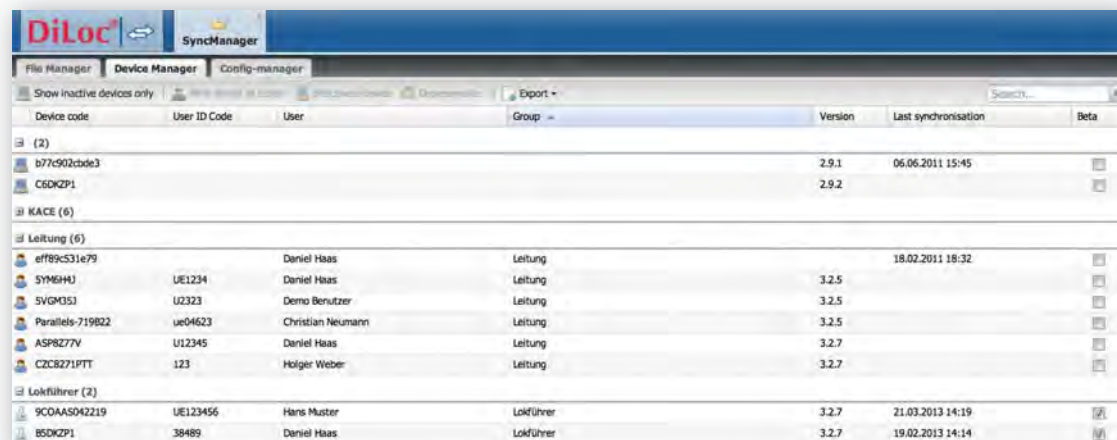


Device Manager

DiLoc | Sync contains a full Lifecycle Management System that monitors the devices from initial delivery to being taken out of service.

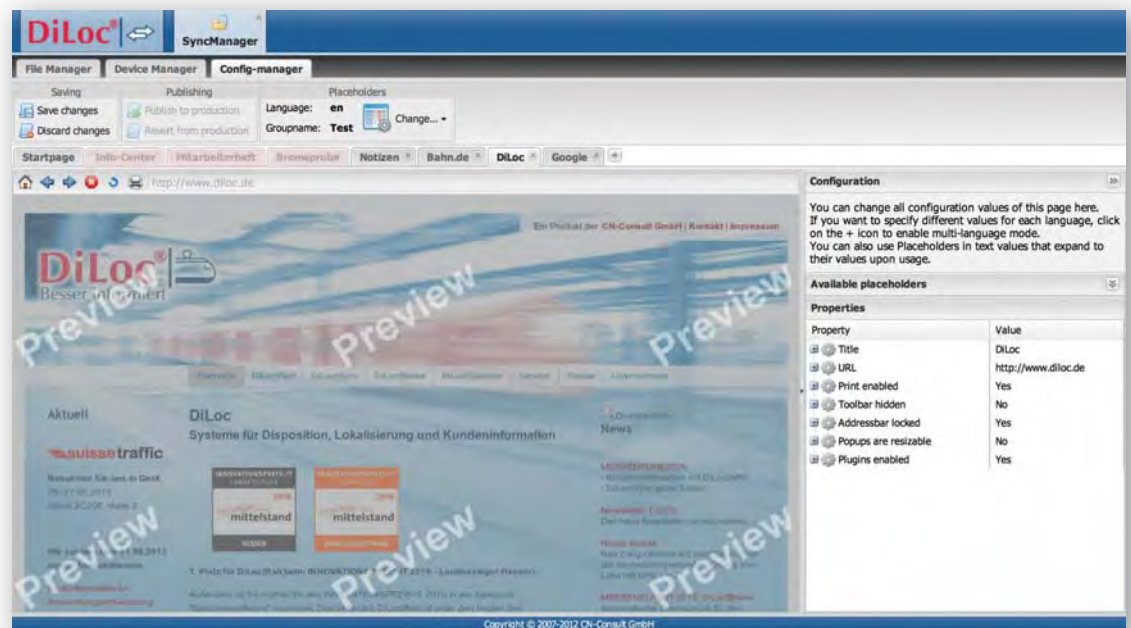
During initial use, every client device (Netbook, Tablet PC, iPad, Android device etc.) is personalised so that it is assigned to a person. Only personalised devices are supplied with data from the server.

The point in time when the last data distribution occurred is logged for each device. This means that the control center also knows whether all engine drivers have the latest versions of all documents. If devices are lost, they can be excluded from the data delivery. If devices are stolen, all documents are automatically deleted when the next synchronisation attempt takes place, therefore preventing data from falling into unauthorised hands.



Configuration Manager (Windows-based devices)

A web browser is integrated in DiLoc|Sync that can be configured via the management console. Any web addresses can be specified for the user (similar to a white list), which are automatically loaded when a switch to the relevant menu tabs takes place. Furthermore, the user can be prevented from entering his own web addresses (or allowed to enter them), as can printing, scrolling or using browser plug-ins, among other things. This makes it possible for the company to control the use of the browser. These settings are assisted by the Configuration Manager, which is intuitive and displays the result of the configuration in the form of a preview.

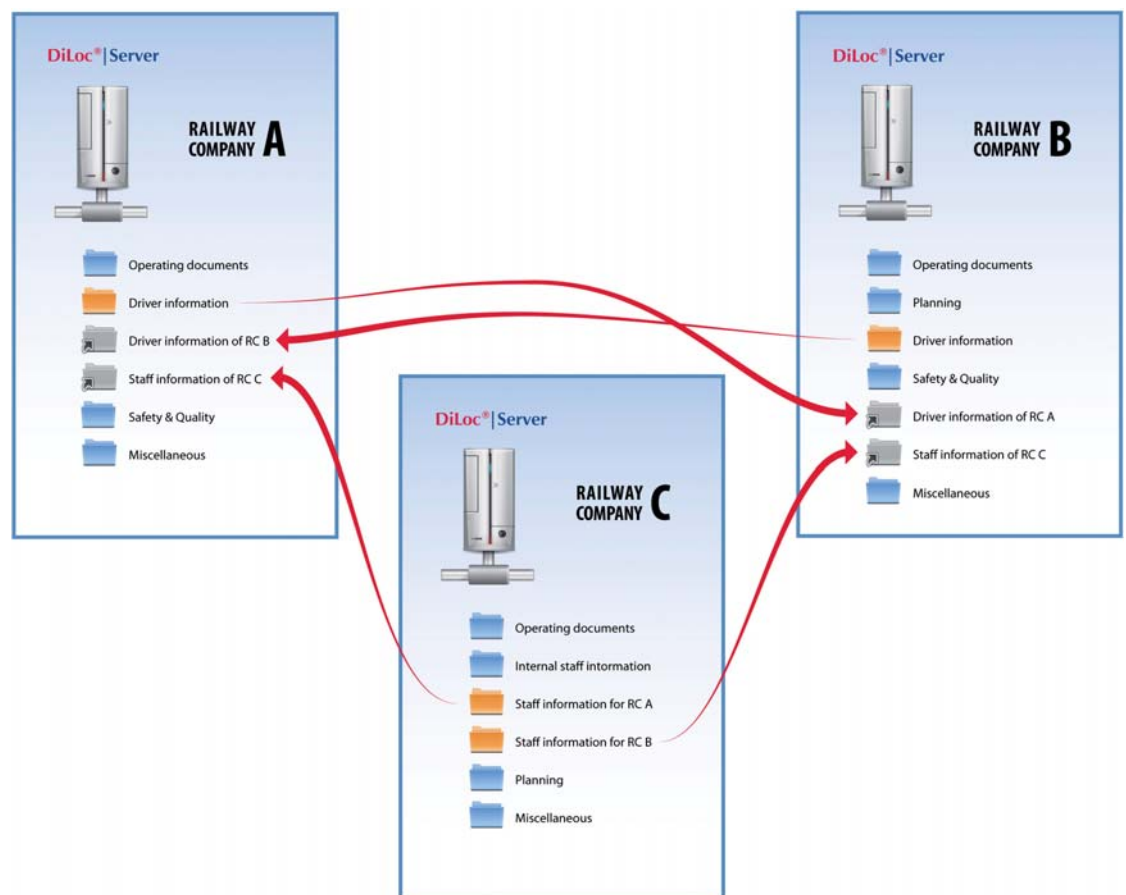


Any number of web sites can be enabled for the engine driver, such as the web site of his company, a web portal for the company software (production system, human resource planning system etc.) or even a web-based mail or calendar system.

Collaboration Module (option)

In train operations it is a frequent occurrence for companies to swap engine drivers. In order to give these engine drivers access to company-related instructions, directives or other documents, it is possible to enable certain directories for engine drivers from other companies in DiLoc|Sync. This fulfils the obligation to provide information without having to go to the trouble of providing the engine driver with paper documentation and

keeping them up to date. This is also made possible by being able to create directories that consist of links to the actual files. These links can then be enabled for external engine drivers. This means that different files can be enabled for engine drivers from different external companies. This also helps with the distribution of special documents to different professional groups within the company (wagon masters, engine drivers, ...).



CNCONSULT

CN-Consult GmbH

Germany
 Ober den Wiesen 9
 D-35756 Mittenaar
 Tel.: +49 (0)2778 3720000
 Fax: +49 (0)2778 3720009
 Email: info@cn-consult.eu

Switzerland
 Kornhausstrasse 27
 CH-8840 Einsiedeln
 Tel.: +41 (0)61 5003756
 Fax: +41 (0)61 5003755
 Email: info@cn-consult.ch

www.cn-consult.eu
 www.diloc.eu

12/2013

DiLoc|Brake

DiLoc|Sync is also the IT platform for the product DiLoc|Brake. The engine driver is provided with a separate tab in the user interface that contains the functions of DiLoc|Brake. More information about this can be found in the DiLoc|Brake exposé.